

# UNISTREAM™



PLC + HMI in One Unit

# UNISTREAM™

## A new generation of control products by Unitronics

The UniStream™ platform comprises a versatile and powerful CPU, a variety of elegant HMI touch-panels, I/O modules and communication modules that are very easy to install and require minimal wiring.



### Scalability

Automate a single machine – use the new All-in-One – it's as easy as 1-2-3.

- 1 Choose an HMI touch panel – 7", 10.4" or 15.6" model.
- 2 Add a CPU – snap it to the back of the panel.
- 3 Select Uni-I/O™ and Uni-COM™ modules – snap them next to the CPU.

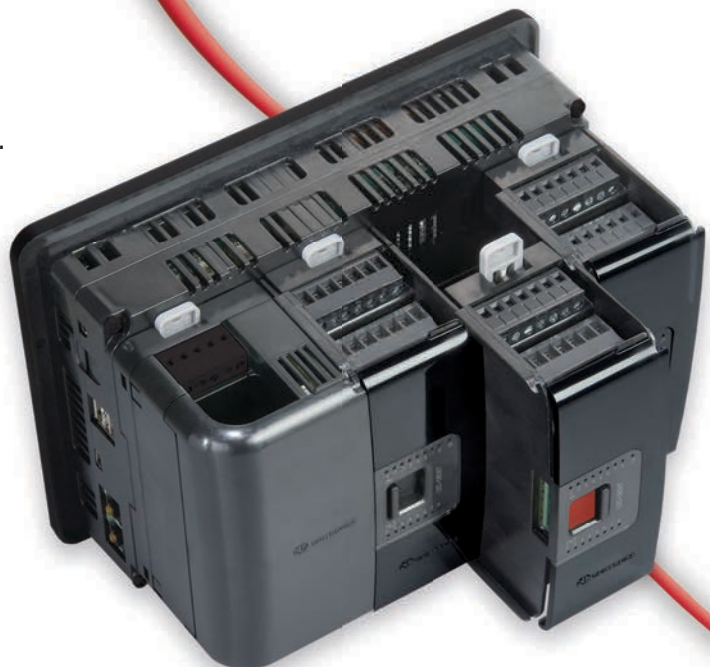
The result is a single, compact controller with an integrated HMI panel and on-board I/Os that suit your specific requirements.

### Expand to control a complex process

A single UniStream™ CPU supports up to 2,048 on-board, local and remote I/Os.

### Use UniStream™ in your factory-wide control project

Integrate third-party devices via Ethernet IP, CANbus or RS232/485 using MODBUS or CANopen. Use the UniLogic™ Message Composer to adapt UniStream™ to other protocols.



I/O or Communication modules are easily snapped to the back of the HMI panel without moving any of the neighboring units.

**The result of  
over 25 years of  
PLC development,  
combined with  
the strongest  
trends in  
automation**

**Connectability**

Access UniStream™ from anywhere at any time

Connect directly via Ethernet or USB, or use VNC to connect mobile phone, tablet, or PC.

Use your browser to surf to UniStream's built-in webserver.

**Profitability**

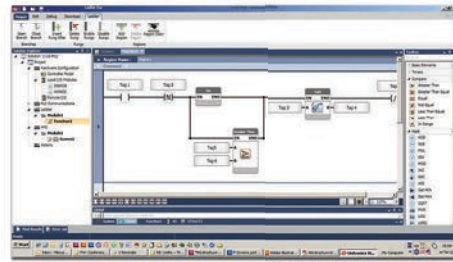
Reduce your Costs

- Free software
- Free support
- Less wiring, less space
- Reduce programming time by 50%:  
faster Time-to-Market

**UniLogic™ Studio**

Work Less – Do More

A new software generation for Control Automation programming:  
Easy to use, time-saving; benefit from the most advanced automation freeware in the field.



**UniApps™**

A Paradigm Change.

An expanding library of value-added PLC embedded Apps.

A UniApp™ for every need – reach your data base, edit data, perform calculations, monitor, troubleshoot, and more.



**Remote Access**

Access your PLC from anywhere at anytime.





# UNISTREAM™

## Building Blocks

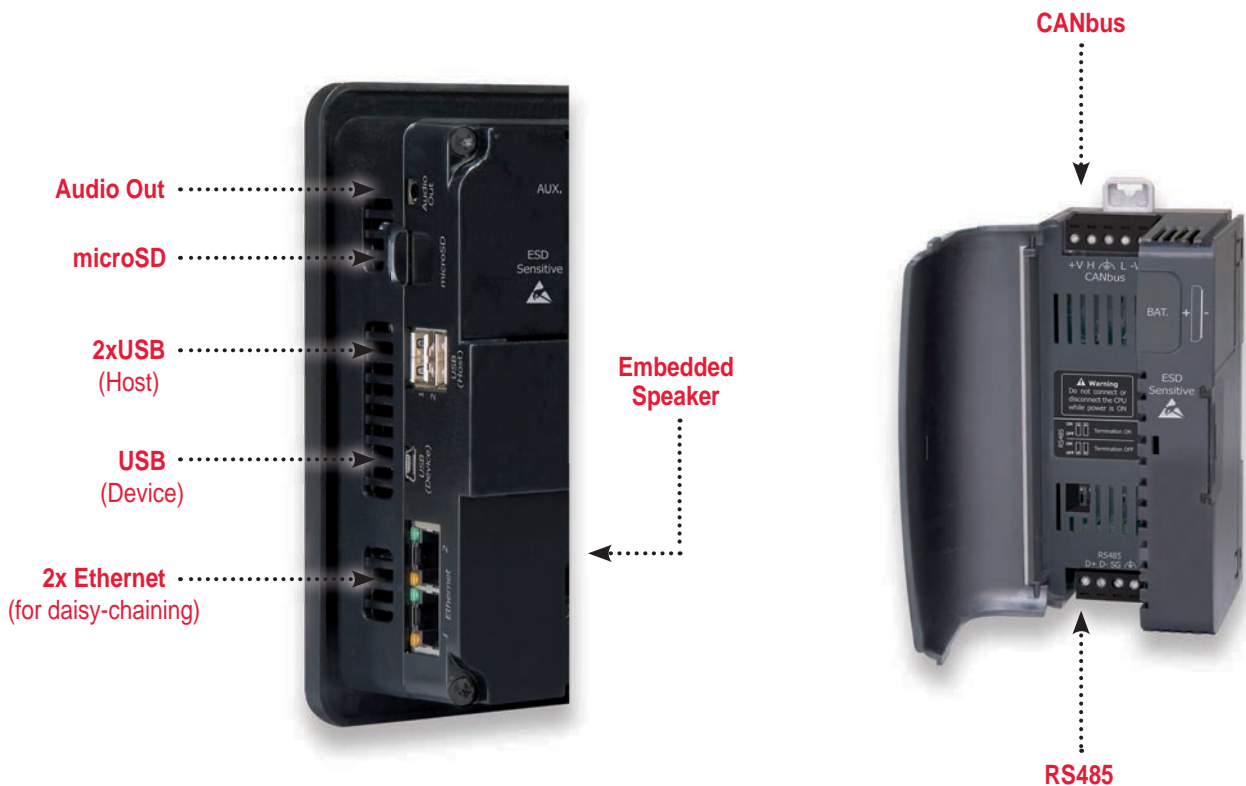
Completely modular in architecture, UniStream™ enables you to create a compact control device that matches your application requirements. Select any UniStream™ HMI panel, add a CPU, and add the right I/O and COM modules to fit your requirements. The result is an all-in-one controller that comprises the optimal configuration for your specific application.



## All-in-One, simple configuration—saves on cabinet space and wiring costs

Use a Local Expansion Adapter to connect UniStream™ to additional I/O modules on a DIN rail.

## Interfaces





	New		
	CPU + 7" HMI Panel	CPU + 10.4" HMI Panel	CPU + 15.6" HMI Panel
Part Number	USC-P-B10 and USP-070-B10	USC-P-B10 and USP-104-B10	USC-P-B10 and USP-156-B10
Number of I/Os per CPU (On-board, local and remote)	Up to 2,048		
On-board Uni-I/O™ or Uni-COM™ Modules (All-in-One configuration)	Snap up to 3 slim modules <sup>(1)</sup>	Snap up to 5 slim modules <sup>(1)</sup>	
Local Uni-I/O™ Modules	The UniStream™ CPU supports a maximum of 16 slim Uni-I/O™ <sup>(1)</sup> (including the on-board modules)		
Remote I/O Expansion	Use EX-RC1 adapters to further extend the number of I/Os		
Bit Operation	0.13 μs		
Ladder Memory	1 MB		
External Memory	microSD and USB Flash drive		
Video	Show MPEG-4 videos on the HMI screen		
Audio	Play MP3 audio files via internal speaker, or external speakers via audio-out jack		
Power Supply	12/24VDC		
Backup Battery	CR2032, Back-up RTC values, system data and retained tags		
Communication			
Ports	2 Ethernet • 1 RS485 • 1 CANbus 2 USB host ports • 1 USB device port for programming		
Protocols	MODBUS, CANopen, BACnet <sup>(2)</sup> Message Composer for 3 <sup>rd</sup> party protocols		
HMI Panel			
Type	TFT, LCD, Touch HMI Panel		
Size	7" (16:9)	10.4" (4:3)	15.6" (16 : 9)
Resolution	800x480 (WVGA)	800x600 (SVGA)	1366x768
Colors	65,536 (16bit)		16M (24bit)
Display Backlight Illumination	White LED		
Environment			
Protection	IP66, IP65 and NEMA4X when panel-mounted <sup>(3)</sup>		
Operating Temperature	-20°C to 55°C (-4°F to 131°F)		0°C to 50°C (32°F to 122°F)

<sup>(1)</sup> 1 wide I/O modules width = 1.5 slim I/O modules width - see table " Digital Uni-I/O™ Modules"

<sup>(2)</sup> Using a gateway model: GW-BAC1

<sup>(3)</sup> UniStream™ complies with IP66 and NEMA4X only with the audio seal installed, please refer to the installation guide of the HMI panel for information.

# UNISTREAM™ Expandability

## On-Board, Local, and Remote

Select the perfect combination of I/O expansion modules and configure them to fit your application. Snap up to 5 modules on a 10.4" or 15.6" HMI panel, up to 3 on a 7" panel. Expand further either locally or remotely.

## Digital Uni-I/O™ Modules

Part no.	New - wide I/O				New - wide I/O			
	UID-1600	UID-0808T	UID-W1616T <sup>(5)</sup>	UID-0808THS <sup>(1)</sup>	UID-0016T	UID-0808R	UID-W1616R <sup>(5)</sup>	UID-0016R
Inputs	16	8	16	8 <sup>(2)</sup> Up to 2 Shaft Encoders 250kHz max	-	8	16	-
Type	Sink or Source <sup>(3)</sup>				-	Sink or Source <sup>(3)</sup>		-
Outputs	-	8	16	8 <sup>(4)</sup> Up to 4 PWM; or, Up to 2 HSO, 250kHz max	16	8	16	16
Type	-	Transistor, Source (pnp), 24VDC				Relay, 24VDC (power supply)		
Isolation	All inputs and outputs are isolated							

(1) The UID-0808THS utilizes two high speed blocks that can each be assigned either to the inputs or to the outputs.

(2) 4 inputs may be configured to function either as normal or as high speed digital inputs, and can support a total of 2 shaft encoders.

(3) Sink (pnp) or Source (npn), 24VDC.

(4) 2 outputs are high speed, up to 250kHz, and may function as normal or high-speed PWM outputs (same frequency and different duty-cycles).

2 outputs are normal speed, and may function as normal speed PWM outputs (same frequency but different duty-cycles).

(5) 1 wide I/O modules width = 1.5 slim I/O modules width

## Analog Uni-I/O™ Modules

UIA-0402N	
Inputs	4
Type	0-10V, 0-20mA, 4-20mA
Resolution	13 bit
Outputs	2
Type	0-10V, ±10V, 4-20mA, 0-20mA
Resolution	14 bit*
Isolation	No

\*13 bit when set as current.

New	
UIS-04PTN*	
Inputs	4
Type	PT100 -200°C ≤ T ≤ 850°C (-328°F ≤ T ≤ 1,562°F) NI100 -100°C ≤ T ≤ 260°C (-148°F ≤ T ≤ 500°F) NI120 -80°C ≤ T ≤ 260°C (-112°F ≤ T ≤ 500°F)
Resistance	0Ω ≤ R ≤ 390Ω
Resolution	RTD – 0.1°C (0.1°F) Resistance – 14 bits
Isolation	No

\*Not yet UL certified.

## Uni-COM™ Communication Modules

Serial Communication Modules	
UAC-01RS2	1x RS232
UAC-02RS2	2x RS232
UAC-02RSC	1x RS232 port and 1x RS485 port

New





## Local Expansion Adapter

Use Short or Long Range Local Expansion Adapters to connect a UniStream™ controller to a row of I/O modules located on a DIN-rail. Daisy-chain up to 5 Local I/O Expansion Adapters to one controller to further increase the number of I/O modules up to 85 I/O units



## Remote Expansion

### UniStream™ and Vision Remote I/Os

UniStream™ connects to Vision Remote I/O modules via CANbus. A transparent software plug-in enables UniStream™ to communicate data via one or more EX-RC1s at distances up to 1,000 meters. Unitronics' existing line of Temperature and Load Cell I/O modules, as well as a variety of Digital and Analog modules, allow you to meet all application requirements.



Digital I/Os							
IO-DI8-T08	IO-DI8-RO4	IO-DI8-RO8	IO-TO16	IO-DI16	IO-RO8	IO-RO16	IO-DI8ACH

Analog and Special I/Os							
IO-AI4-AO2	IO-PT400	IO-PT4K	IO-AO6X	IO-LC1	IO-LC3	IO-ATC8	IO-AI8

Combo Digital/Analog I/Os	
IO-D16A3-RO16	IO-D16A3-TO16



**Free of charge**

## Work Less - Do More

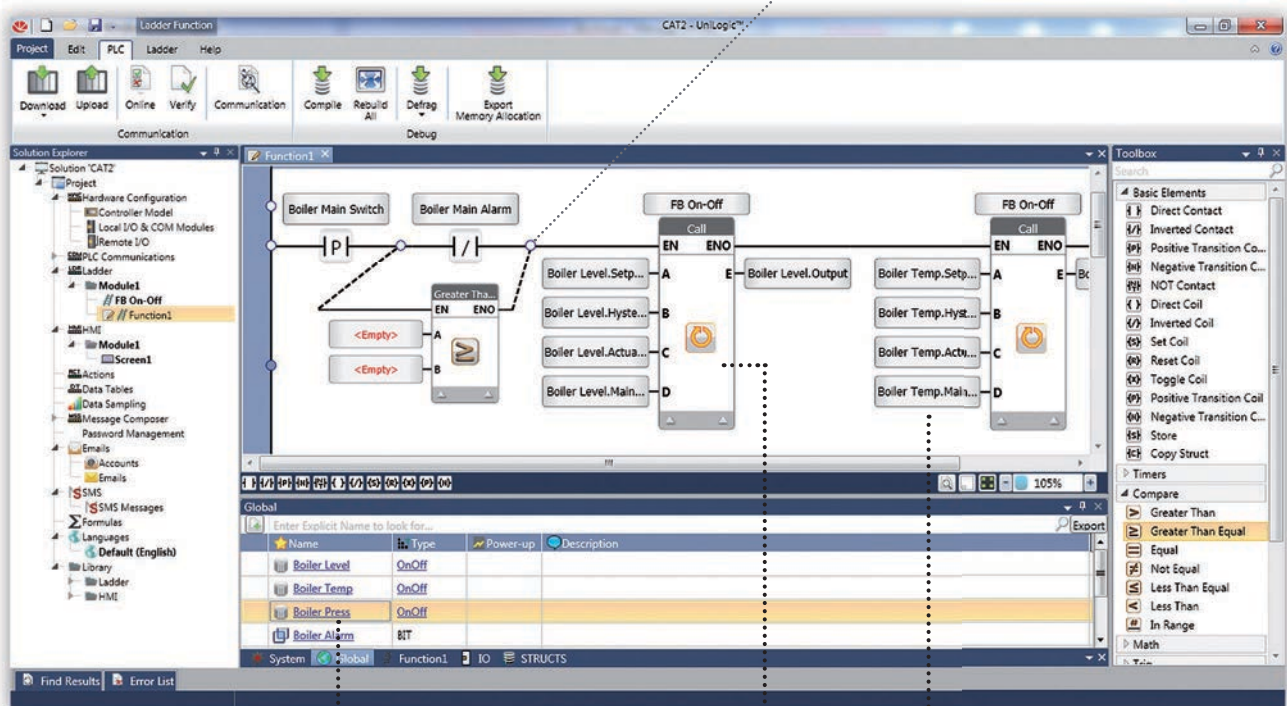
UniLogic™ Studio provides a unified environment for hardware and communication configuration, Ladder, and HMI applications.

### The Ladder Programming Revolution

Cut your program development time in half

- Logically-organized programming environment — everything is visible
- Build-it-once and re-use paradigm
- Incredibly intuitive and easy to use
- Customizable: pin, float, and dock, keyboard shortcuts

Drag & Drop Elements  
and UDFBs



#### STRUCTS

Group different Data Types  
into a single logical unit  
Create your own Data Types  
Use/reuse whenever applicable

#### User Defined Function Blocks

Build Once  
Drag & Drop UDFBs  
Port between applications

#### Tags

In place of addressing  
Name tags and select their  
data types — addressing  
takes care of itself

## All-in-One: Ladder, HMI, Hardware Configuration, and Communication



## Advanced HMI Design

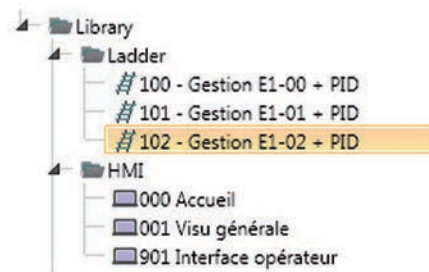
Create the most amazing screen designs

- Multi-layer elements (with opacity)
- Complete object rotation
- Video, animated gifs, sound clips
- Drag & Drop widgets: user controls, pop-ups and more
- Unicode fonts



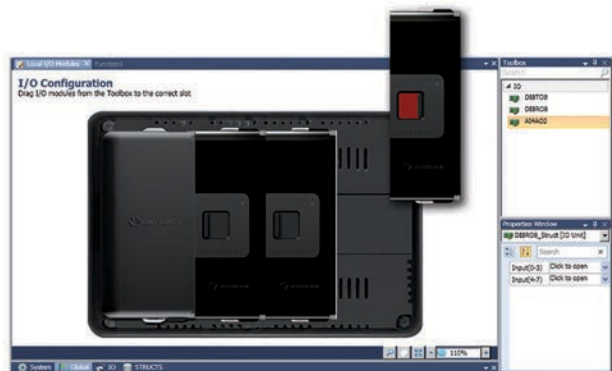
## UDFB's –Build it Once

- Save UDFBs and HMI screens to your Library
- Use them in any project



## User-Friendly Hardware Configuration

- Drag & Drop modules
- I/O Tags, automatically created
- Easy I/O configuration



Drag & Drop I/O Modules onto the back of a 7" UniStream™ Panel

## Flexible Communications

- Simply Configure & Communicate
- No Ladder Programming needed
- Multiple slave/master definitions per CPU



Multiple slave/master definitions per CPU

### Media files: Video and Audio

Use audio files, either your own or those offered by UniLogic™, to emphasize HMI actions using sounds. Integrate alert, warning or confirmation sounds in your application to clarify the situation to the end user. Use the internal or external speakers.



### Data Tables

Create multiple Data Tables to implement Recipes and manage Data Logs. Populate data tables manually, or import data from Excel files. Use the Data Table Widget to enable user access to the Data Table directly from the UniStream™ screen in real-time.



### Multi Language

Switch HMI language with a single touch. Create your application screens in several languages, and enable users to switch between them in real-time from the UniStream™ screen.



### Remote Access

Connect directly via Ethernet or USB, or use VNC to connect a mobile phone, a tablet, or a PC.



### .pdf Viewer

This new HMI widget enables you to display a .pdf, and allow the user to page through it and adjust the Zoom level.



### Data Logging & Trends

Use Data Sampler to simultaneously sample and log hundreds of different inputs. Data Sampler files can be viewed, exported or mailed. Use Trends to display different combinations of inputs in graphical form, both in real time or as histograms.



### Password Protection System

Multilevel password protection. Create permissions for entering UniApps™, uploading the application from UniStream™ to the PC, and for Remote Access.



# UNISTREAM™ Product List

Product	Part #	Description
CPU	USC-P-B10	CPU-for-Panel
Panels	USP-070-B10	UniStream™ 7" – HMI Panel
	USP-104-B10	UniStream™ 10.4" – HMI Panel
	USP-156-B10	UniStream™ 15.6" - HMI Panel
Communication Modules	UAC-01RS2	Uni-COM™ – 1xRS232
	UAC-02RS2	Uni-COM™ – 2xRS232
	UAC-02RSC	1x RS232 port and 1x RS485 port
Expansion Adapters	UAG-XK125	Short Range Local Expansion Kit, 125 cm (4 feet)
	UAG-XKP125	Short Range Power Supply Local Expansion Kit, 125 cm (4 feet)
	UAG-XK300	Short range local expansion kit, 300 cm
	UAG-XKP300	Short range local expansion kit with embedded Power Supply, 300 cm
	UAG-XKPLXXX	Long range power supply expansion kit; available lengths: 600, 1200, 1500, 2000 and 3000cm

Product	Part #	Description	Inputs	Outputs
Input/Output Modules	UID-0808R	Uni-I/O™ Digital	8	8 Relay
	UID-W1616R	Uni-I/O™ Digital	16	16 Relay
	UID-0808T	Uni-I/O™ Digital	8	8 Transistor
	UID-W1616T	Uni-I/O™ Digital	16	16 Transistor
	UID-0808THS	Uni-I/O™ Digital – High Speed	8	8 Transistor
	UID-1600	Uni-I/O™ Digital	16	-
	UID-0016R	Uni-I/O™ Digital	-	16 Relay
	UID-0016T	Uni-I/O™ Digital	-	16 Transistor
	UIA-0402N	Uni-I/O™ Analog	4	2
UIS-04PTN	Uni-I/O™ Analog-RTD	4	-	

Product	Part #	Description
DIN Rail Power Supplies	UAP-24V24W	24W 24V 1A
	UAP-24V60W	60W 24V 2.5A
	UAP-24V96W	96W 24V 4A

## Picture Challenge Winners!

In the past few months we received wonderful Unistream training pictures of from all over the world. These are the two winning pictures:



SCHMACHTL GmbH, Austria



THEMTECH, Thailand

## Customer Experience

### The Support Team

- Free support, always available by email, phone, or in person
- Open webinars on products and features

### The Unitronics User's Forum

- A strong worldwide community of automation professionals working together for mutual benefit – a great place for discussions, exchange of ideas and for getting support.

### The World Wide Distribution Network

- Over 160 distributors on 5 continents

### The Company

- Professional, Experienced, Market-Driven

## Free Technical Support

Call Unitronics – Speak directly with our support experts:

+972-3-977-8866, e-mail – [support@unitronics.com](mailto:support@unitronics.com)

Visit – <http://forum.unitronics.com> to get answers from forum members and Unitronics' experts.

The information in this document reflects products at the date of printing. Unitronics reserves the right, subject to all applicable laws, at any time, at its sole discretion, and without notice, to discontinue or change the features, designs, materials and other specifications of its products, and to either permanently or temporarily withdraw any of the foregoing from the market. All information in this document is provided "as is" without warranty of any kind, either expressed or implied, including but not limited to any implied warranties of merchantability, fitness for a particular purpose, or non-infringement. Unitronics assumes no responsibility for errors or omissions in the information presented in this document. In no event shall Unitronics be liable for any special, incidental, indirect or consequential damages of any kind, or any damages what so ever arising out of or in connection with the use or performance of this information. The tradenames, trademarks, logos and service marks presented in this document, including their design, are the property of Unitronics (1989) (R"G) Ltd. or other third parties and you are not permitted to use them without the prior written consent of Unitronics or such third party as may own them.





**Argentina:**  
AEA SACIF  
Tel: 11 457 41 555, Fax: 11 457 42 400  
servicioalcliente@aea.com.ar, www.aea.com.ar



**Australia:**  
Micromax Sensors & Automation Pty Ltd.  
Tel: 1300 36 26 26, Fax: 1300 01 71 00  
info@micromaxsa.com.au, www.micromaxsa.com.au



**Austria:**  
Schmachtl GmbH  
Tel: 0732/7646-0, Fax: 0732/7-646-704  
office@schmachtl.at, www.schmachtl.at



**Belarus:**  
Klinkmann Belarus  
Tel: 17 2000876, Fax: 17 2272082  
minsk@klinkmann.com, www.klinkmann.com



**Belgium:**  
Isotron Systems BVBA  
Tel: 034 507 045, Fax: 034 507 046  
info@isotron.eu, www.isotron.eu



**Bosnia and Herzegovina:**  
Tipteh d.o.o. Beograd  
Tel: 381 11 30 18 326, Fax: 381 11 31 31 057  
damir.vecerka@tipteh.rs, www.tipteh.rs



**Brazil:**  
DAKOL Instrumentos e Sistemas Ltda.  
Tel: (11) 3231 4544, Fax: (11) 3231 4544  
vendas@dakol.com.br, www.dakol.com.br



**Bulgaria:**  
Semo Ltd.  
Tel: 2 942 4754, Fax: 2 942 4762  
engineering@semo.bg, www.semo.bg



**Canada:**  
Unitronics, Inc.  
Toll free: 866 666 6033  
Tel: 617 657 6596, Fax: 617 657 6598  
usa.sales@unitronics.com, www.unitronics.com



**Chile:**  
Schädler Sick SpA  
Tel: (2) 274 7430, Fax: (2) 204 9338  
info@schadler.com, www.schadler.com



**China:**  
Beijing Ample Thrive CO, Ltd.  
Tel: 010-88177186, 010-88177187  
sales@a082.com, www.a082.com



**Colombia:**  
COLSEIN Ltda.  
Tel: 1-519 0967, Fax: 1-519 0967 Ext. 101  
info@colsein.com.co, www.colsein.com.co



**Croatia:**  
Tipteh d.o.o. (Slovenia)  
Tel: 013 816 574, Fax: 013 816 577  
tipteh@tipteh.hr, www.tipteh.si



**Cyprus:**  
Anaxagoras Pneumatics Ltd.  
Tel: 022 442 200, Fax: 022 495 953  
sales@anaxagoras.eu, www.anaxagoras.eu



**Czech Republic:**  
Schmachtl CZ, spol. s r.o.  
Tel: 244 001 559, Fax: 244 910 700  
unitronics@schmachtl.cz, www.schmachtl.cz



**Denmark:**  
Desim Elektronik ApS  
Tel: 70 22 00 66, Fax: 70 22 22 20  
desim@desim.dk, www.desim.dk



**Ecuador:**  
AUTOCONTROL S.A.  
Tel: 593-4-6026250, Mobile: 593-998661398  
gerencia@akontrol.com.ec, www.akontrol.com.ec



**Estonia:**  
Klinkmann Eesti AS  
Tel: 6 684 500, Fax: 6 684 501  
klinkmann.est@klinkmann.ee, www.klinkmann.com



**Finland:**  
Klinkmann Automation Oy  
Tel: 9 540 49 40, Fax: 9 541 35 41  
automation@klinkmann.fi, www.klinkmann.com



**France:**  
PL Systems  
Tel: 016 092 4171, Fax: 016 928 4193  
info@pl-systems.fr, www.pl-systems.fr



**Germany:**  
Spectra GmbH & Co. KG.  
Tel: 0 71 21/143 21-0, Fax: 0 71 21/143 21-90  
spectra@spectra.de, www.spectra.de



**Greece:**  
Automation & Power Control Ltd.  
Tel: 210 531 3111, Fax: 210 598 1435  
info@apc.com.gr, www.apc.com.gr



**Hong Kong:**  
Automate Control Engineering Ltd.  
Tel: 02 342 72 76, Fax: 02 342 72 29  
are@automate.corp.com.hk, www.automate-are.com



**Honduras:**  
Electrical Dealer  
Tel: 558 1400, Fax: 557 9709  
info@electrical-dealer.com, www.electrical-dealer.com



**Hungary:**  
Kvalix Automatika Kft.  
Tel: 1 272 2242, Fax: 1 272 2244  
info@kvalix.hu, www.kvalix.hu



**India:**  
Rajdeep Automation Pvt Ltd.  
Tel: 020-243 937 55, Fax: 020 243 937 56  
sales@rajdeep.in / info@rajdeep.in, www.rajdeep.in



**Ireland:**  
Automated Components Ireland Ltd. (ACI)  
Tel: 016 282 824, Fax: 016 283 536  
ddownes@auto-comp-irl.com, www.auto-comp-irl.com



**Island:**  
Samey ehf  
Tel: 354 510 5200, Fax: 354 510 5201  
Sala@samey.is, www.samey.is



**Israel:**  
Zivan Instruments Co. Ltd.  
Tel: 04 872 98 22, Fax: 04 872 66 27  
info@zivan.co.il, www.zivan.co.il



**Italy:**  
TELESTAR s.r.l.  
Tel: 0321 966 768, Fax: 0321 996 281  
telstar@teletstar-automation.it, www.teletstar-automation.it



**Latvia:**  
Klinkmann Lat Ltd.  
Tel: 6738 16 17, Fax: 6738 24 51  
klinkmann@klinkmann.lv, www.klinkman.com



**Lithuania:**  
UAB Klinkmann Lit  
Tel: 5 216 1646, Fax: 5 216 2641  
post@klinkmann.lt, www.klinkmann.com



**Macedonia:**  
Tipteh d.o.o. Skopje  
Tel: 070 399 474, Fax: 023 174 197  
tipteh@on.net.mk, www.tipteh.si



**Malaysia:**  
Yewtech SDN BHD  
Tel: 168 761 575, Fax: 856 112 99  
sales@yewtech.com, www.yewtech.com



**Malta:**  
RAYAIR Automation Limited  
Tel: 2 16 724 97, Fax: 21 8 051 81  
Info@rayair-automation.com  
sales@rayair-automation.com, www.rayair-automation.com



**Mexico:**  
Sistemas de Control Autec, S.A. de C.V.  
Tel: 55 527 885 19, Fax: 55 527 885 32  
soporte@scautec.com, www.scautec.com



**The Netherlands:**  
Isotron Systems BV  
Tel: 073 639 1639, Fax: 073 639 1699  
info@isotron.nl, www.isotron.nl



**New Zealand:**  
EMC Industrial Group Ltd.  
Tel: 9 415 5110, Fax: 9 415 51 15  
sales@emc.co.nz, www.emc.co.nz



**Nigeria:**  
Technosuite Limited  
Tel: 1 804 0237, Fax: 1 271 6985  
enquiries@technosuiteltd.com, www.technosuiteltd.com



**Norway:**  
Tormatic as  
Tel: 33 16 50 20, Fax: 33 16 50 45  
info@tormatic.no, www.tormatic.no



**Peru:**  
EPLI SAC  
Tel: 330 1595, Fax: 431 1492  
info@eppli.com.pe, www.eppli.com.pe



**Philippines:**  
Cosine Industries INC  
Tel: 2 350 74 48, Fax: 2 412 73 21  
sales@cosine.net.ph, www.cosine.net.ph



**Poland:**  
Elmark Automatyka Sp. z o.o.  
Tel: 22 541 84 60, Fax: 22 541 84 61  
elmark@elmark.com.pl, www.elmark.com.pl



**Portugal:**  
Tecnilab Portugal, SA  
Tel: 21 722 08 70, Fax: 21 726 45 50  
geral@tecnilab.pt, www.tecnilab.pt



**Romania:**  
Syscom 18 SRL  
Tel: 2 3 10 26 78/79, Fax: 021 316 91 76/79  
mihai.radu@syscom18.com, www.syscom.ro



**Russia:**  
ZAO Klinkmann Spb  
St.Petersburg  
Tel: 812 327 37 52/26, Fax: 812 327 37 53  
klinkmann@Klinkmann.spb.ru, www.klinkmann.com  
Moscow branch  
Tel: 495 641 1616, Fax: 495 641 3434  
moscow@klinkmann.spb.ru, www.klinkman.com  
Yekaterinburg branch  
Tel: 343 287 19 19, Fax: 343 287 19 19  
yekaterinburg@klinkmann.spb.ru, www.klinkman.com  
Samara branch  
Tel: 846 273 95 85, Fax: 846 273 95 85  
samara@klinkmann.spb.ru, www.klinkman.com



**Serbia:**  
Tipteh d.o.o. Beograd  
Tel: 381 11 30 18 326, Fax: 381 11 31 31 057  
damir.vecerka@tipteh.rs, www.tipteh.rs



**Singapore:**  
YT AUTOMATION SINGAPORE PTE LTD  
Tel: 66840702, Fax: 66840703  
ytautomation@singnet.com.sg, www.ytautomation.com



**Slovakia:**  
S.D.A. s.r.o.  
Tel: 48 472 34 11, Fax: 48 472 34 69  
sekretariat@s-d-a.sk, www.s-d-a.sk



**Slovenia:**  
Tipteh d.o.o.  
Tel: 012 005 150, Fax: 012 005 151  
info@tipteh.si, www.tipteh.si



**South Africa:**  
Vision Automation  
Tel: 011 826 7365, Fax: 011 826 7361  
info@visionautomation.co.za, www.unitronics.co.za



**Spain:**  
SIDE, SA  
Tel: 93 846 4801, Fax: 93 849 1394  
info@side.es, www.side-automatizacion.com



**Sweden:**  
Sensorgruppen AB  
Tel: 08 731 5190, Fax: 08 731 5105  
info@sensorgruppen.se, www.sensorgruppen.se



**Switzerland:**  
COMAT AG Industrielle Elektronik  
Tel: (0) 31 838 55 77, Fax: (0) 31 838 55 99  
info@comat.ch, www.comat.ch



**Taiwan:**  
MARK Automation Tek. Inc.  
Tel: 02-25700992, Fax: 02-25700816  
products@marktech.com.tw, www.marktek.com.tw



**Thailand:**  
Themtech Company Ltd.  
Tel: (2) 693 66 29, Fax: (2) 693-66 30  
suwicha@themtech.co.th, www.themtech.co.th



**Turkey:**  
Yorum Otomatik Kontrol  
Tel: 212 210 94 95, Fax: 212 210 94 99  
yorum@yorum-automation.com, www.yorum-automation.com



**Ukraine:**  
Klinkmann Ukraine LLC  
Tel: 44 495 33 40, Fax: 44 495 33 41  
klinkmann.kiev@klinkmann.kiev.ua, www.klinkmann.com



**United Kingdom:**  
Local UK distributors: contact Unitronics Ltd.  
Tel (Israel): +972 3 977 88 94, Fax: +972 3 977 88 77  
export@unitronics.com, www.unitronics.com



**USA: Unitronics Inc.**  
Toll free: 866 666 6033  
Tel: 617 657 6596, Fax: 617 657 6598  
usa.sales@unitronics.com, www.unitronics.com



**Venezuela:**  
Intrave, C.A.  
Tel: 0212 953 5080, Fax: 0212 951 2521  
ventas@intrave.com, www.intrave.com



**Vietnam:**  
ANS  
Tel: 8 3517 0401 Ext:17, Fax: 8 3517 0403  
sales.ans@ansvietnam.com, www.ansvietnam.com



**UNITRONICS®**  
www.unitronics.com